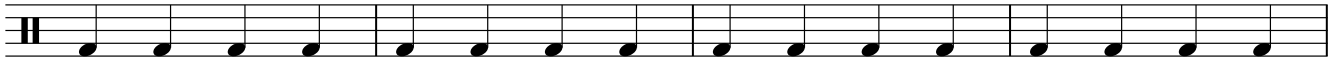
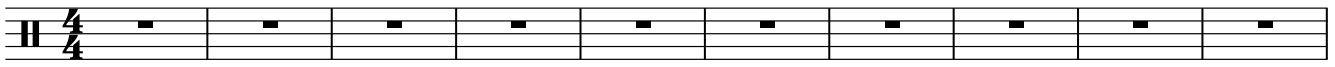


# ROLLING IN THE DEEP

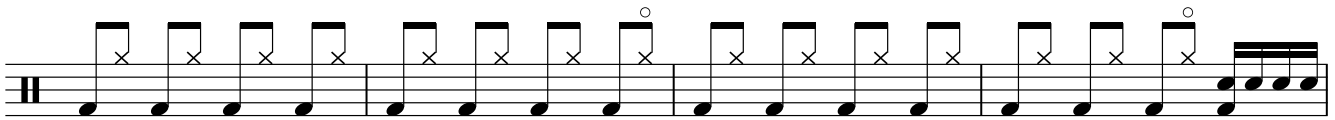
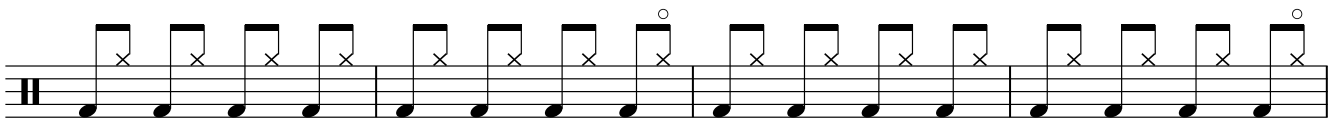
ADELE

♩ = 105 Gtr.

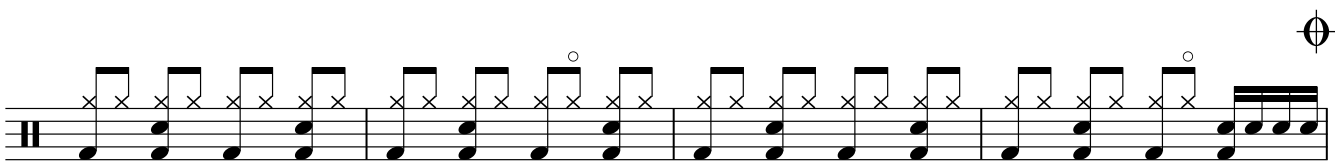
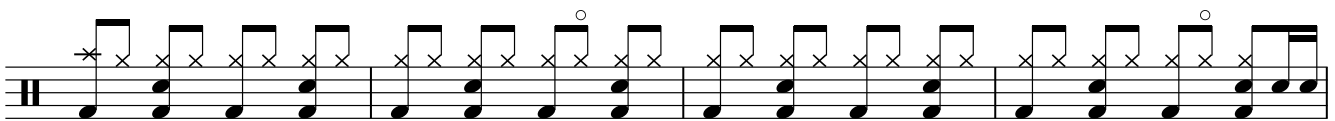
## VERSE



## PRE CHORUS



## CHORUS



## VERSE



2 ROLLING IN THE DEEP

Musical notation for the first section of the song. It consists of a drum set part and a melodic line. The drum set part is a simple pattern of eighth notes. The melodic line is a sequence of eighth notes, with some notes marked with an 'x' and a circled note at the end of the phrase.

PRE CHORUS

Musical notation for the pre-chorus section. It consists of a drum set part and a melodic line. The drum set part is a simple pattern of eighth notes. The melodic line is a sequence of eighth notes, with some notes marked with an 'x' and a circled note at the end of the phrase.

Musical notation for the end of the pre-chorus section. It consists of a drum set part and a melodic line. The drum set part is a simple pattern of eighth notes. The melodic line is a sequence of eighth notes, with some notes marked with an 'x' and a circled note at the end of the phrase.

D.S. al Coda

BRIDGE

Musical notation for the first part of the bridge section. It consists of a drum set part and a melodic line. The drum set part is a simple pattern of eighth notes. The melodic line is a sequence of eighth notes, with some notes marked with an 'x' and a circled note at the end of the phrase.

Musical notation for the second part of the bridge section. It consists of a drum set part and a melodic line. The drum set part is a simple pattern of eighth notes. The melodic line is a sequence of eighth notes, with some notes marked with an 'x' and a circled note at the end of the phrase.

BREAKDOWN

Musical notation for the first part of the breakdown section. It consists of a drum set part and a melodic line. The drum set part is a simple pattern of eighth notes. The melodic line is a sequence of eighth notes, with some notes marked with an 'x' and a circled note at the end of the phrase.

Musical notation for the second part of the breakdown section. It consists of a drum set part and a melodic line. The drum set part is a simple pattern of eighth notes. The melodic line is a sequence of eighth notes, with some notes marked with an 'x' and a circled note at the end of the phrase.

Musical notation for the final part of the breakdown section. It consists of a drum set part and a melodic line. The drum set part is a simple pattern of eighth notes. The melodic line is a sequence of eighth notes, with some notes marked with an 'x' and a circled note at the end of the phrase.

Musical notation for the first section of the piece. It begins with a treble clef and a common time signature. The first two measures contain rests. The third measure has an asterisk above the staff. The notation continues with a series of eighth notes and chords, ending with a double bar line.

OUTRO

The first line of the OUTRO section, consisting of a single staff of music with a treble clef and common time. It features a sequence of eighth notes and chords, with an asterisk above the first note.

The second line of the OUTRO section, continuing the sequence of eighth notes and chords from the first line.

The third line of the OUTRO section, continuing the sequence of eighth notes and chords.

The fourth line of the OUTRO section, concluding with a double bar line and the word "Fine" written below the staff.